

# A PLAT OF PINEAPPLE PLANTATION PLAT TWO, A P.U.D.

BEING A REPLAT OF A PORTION OF SECTION 20, TOWNSHIP 37 SOUTH,  
RANGE 41 EAST, ST. LUCIE GARDENS AS RECORDED IN PLAT BOOK 1, PAGE 35  
OF THE PUBLIC RECORDS OF ST. LUCIE (NOW MARTIN) COUNTY, FLORIDA.

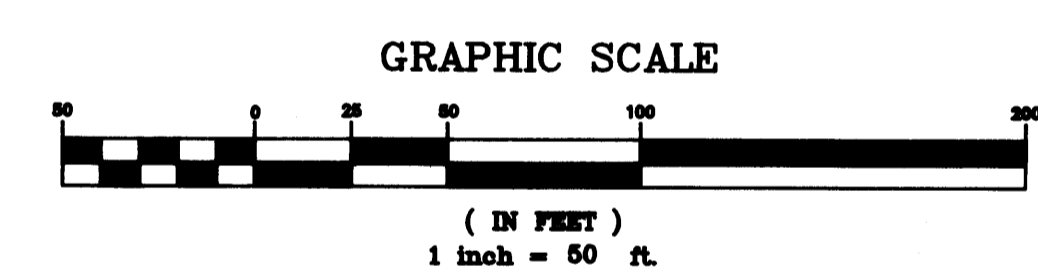
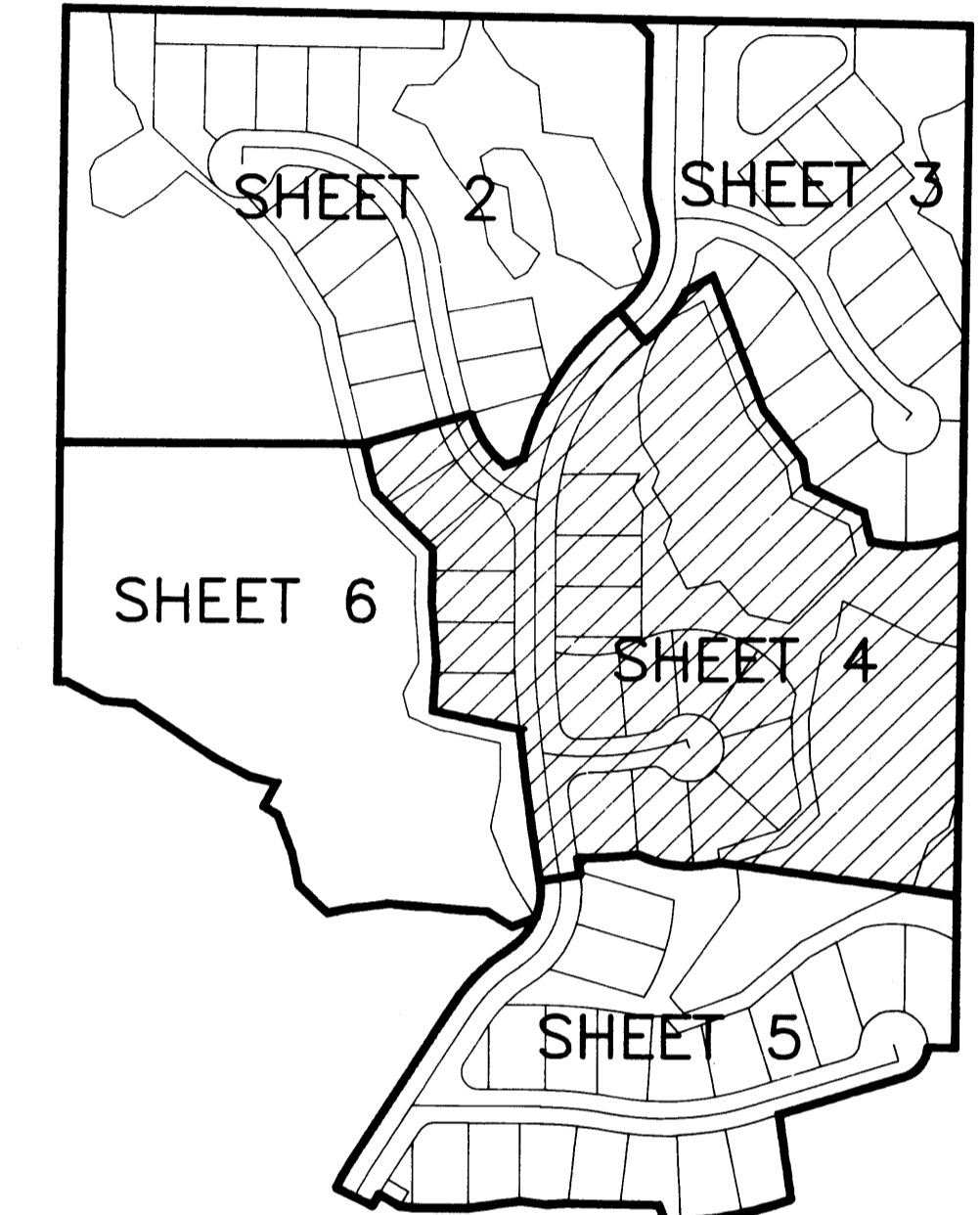
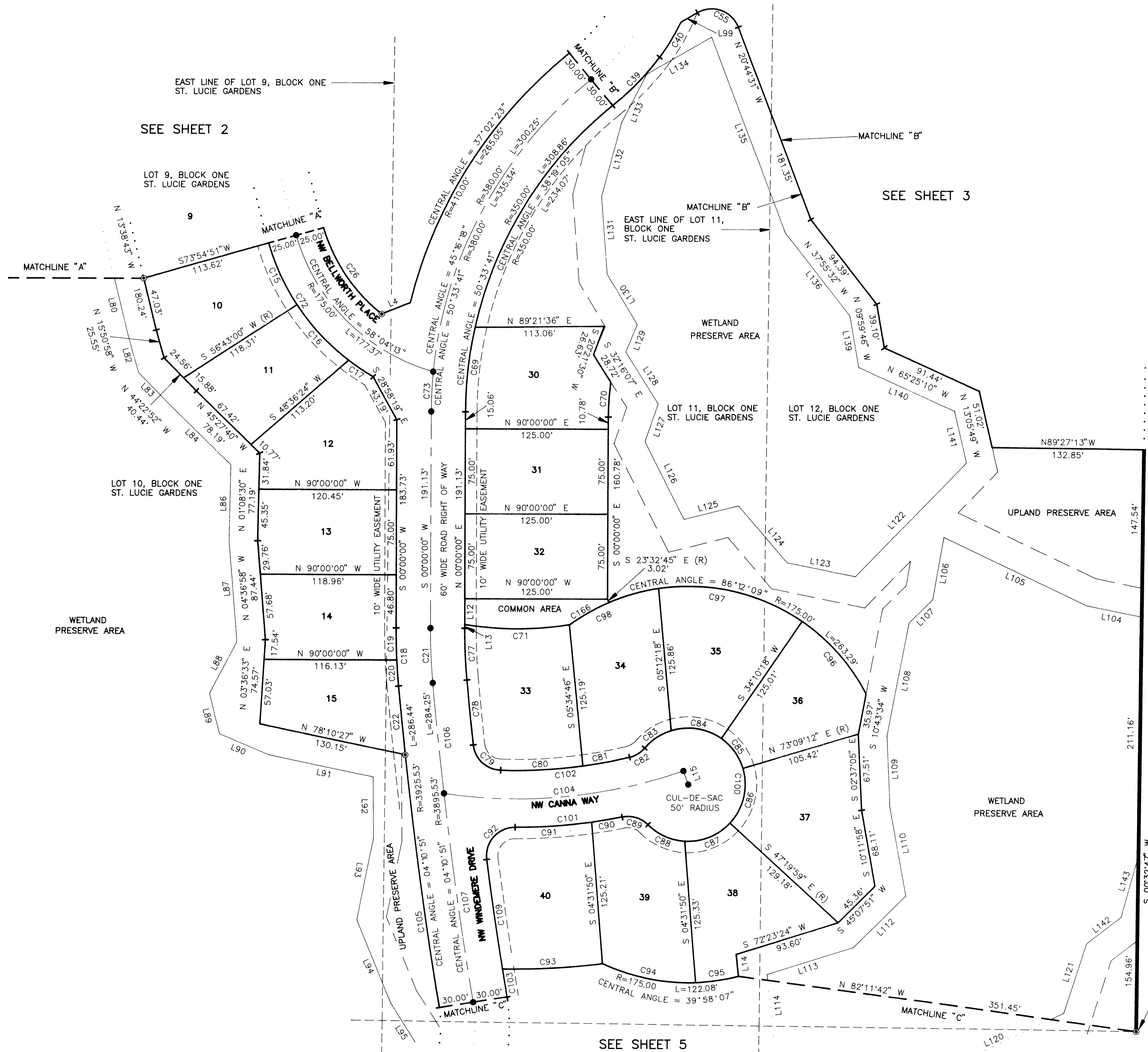
CLERKS RECORDING CERTIFICATE

I, MARSHA STILLER, CLERK OF THE CIRCUIT COURT OF MARTIN COUNTY, FLORIDA, HEREBY CERTIFY THAT THIS PLAT WAS FILED FOR IN PLAT BOOK 1, PAGE 35, MARTIN COUNTY, FLORIDA, PUBLIC RECORDS THIS 20 DAY OF Feb 1997.

*Marsha Stiller*  
MARSHA STILLER, CLERK OF THE CIRCUIT COURT  
MARTIN COUNTY, FLORIDA  
FILE NUMBER 1249770 BY *Jimmy Coles*  
DEPUTY CLERK

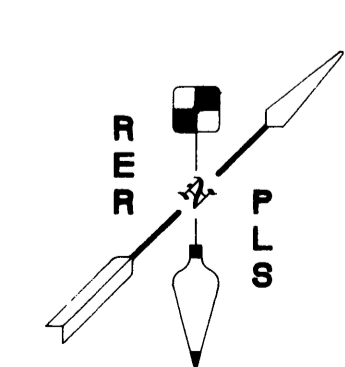
SHEET 4 OF 7

SUBDIVISION PARCEL CONTROL NUMBER



- NOTES**
1. THE SURVEY BEARINGS SHOWN HEREON ARE BASED ON THE EAST LINE OF U.S. HIGHWAY NUMBER ONE SECTION 20, TOWNSHIP 37 SOUTH, RANGE 41 EAST, BEARING N 18°41'27" W.
  2. THERE SHALL BE NO BUILDINGS OR OTHER KIND OF CONSTRUCTION OR TREES PLACED ON DRAINAGE EASEMENTS.
  3. THERE SHALL BE NO BUILDINGS OR OTHER PERMANENT STRUCTURES PLACED ON UTILITY EASEMENTS.
  4. WHERE DRAINAGE EASEMENTS AND UTILITY EASEMENTS CROSS, DRAINAGE EASEMENTS TAKE PRECEDENCE.

- LEGEND**
- - DENOTES P.R.M. (PERMANENT REFERENCE MONUMENT)
  - - DENOTES P.C.P. (PERMANENT CONTROL POINT)
  - (R) - DENOTES RADIAL LINE
  - R.O.W. - RIGHT-OF-WAY
  - NOT TO SCALE
  - △ - CENTRAL ANGLE
  - R - RADIUS
  - L - ARC LENGTH



**ROLAND E. ROLLINS**  
PROFESSIONAL LAND SURVEYOR  
2119 SOUTHEAST SUNFLOWER STREET  
PORT ST. LUCIE, FLORIDA 34952  
561-398-1509